



**Superior Residences
of Clermont**



Superior Residences of Clermont

Welcome!

On behalf of our entire team at Superior Residences of Clermont, we'd like to be the first to say welcome!

As you begin your journey to find a new place to call home, we hope that we are able to answer your questions as you move forward with the very important decision to move into a senior living community.

Superior Residences of Clermont offers residents both assisted living and memory care with life enrichment programs that are individually customized to encompass the core ideas of family, comfort and new experiences.

Experience has taught us that every moment is precious for our residents and their families. We look forward to welcoming you into our community!

Warmest regards,

Deborah Ragan
Executive Director
Superior Residences of Clermont



Making the most of every day.

Assisted Living

Assisted living at Superior Residences of Clermont allows our residents to discover all the comforts, amenities and services necessary for an active and engaging lifestyle - while receiving personalized support and services from our caring and compassionate team to live every day with confidence.

Assisted Living Amenities & Services

Beautiful studio, one and two bedroom apartments

Providing that 'right at home' feeling

Caring, dedicated and passionate staff

Focusing on your physical, emotional and spiritual wellbeing

Resident-centric care

Access to 24/7 care assistance, health maintenance, wellness and medication management

Daily living assistance

We give you the peace of mind to live your best life knowing help is always close by

Weekly housekeeping, laundry and linen services

We take care of the details, so you can focus on what you enjoy

Resident-inspired social calendar

Enjoy a full daily calendar of activities designed to keep you engaged and fulfilled

Scheduled local transportation

Enjoy group outings or schedule a ride to an appointment

Beautiful common areas

Perfect for enjoying a good book or hosting your friends and family

Game and Activity rooms

Enjoy a game of bridge, watch a movie or socialize with friends

Chef-inspired dining

Three delicious chef-inspired meals a day in our dining room and enjoy our private dining area for special events

Outdoor courtyard

Enjoy all the Sunshine State has to offer



Making every moment memorable.

Memory Care

We believe deeply in providing personalized care for each resident in our memory care community. Our teams have been trained in programming with the intention of building the quality of life through every day activities in a meaningful way. We strive to highlight each resident we serve and celebrate all of the past and present achievements.

Amenities & Services

Beautiful private and companion apartments

Providing that 'right at home' feeling

Caring, dedicated and passionate staff

Who take your loved one's well being and safety seriously

Warm and secured environment

Offering residents a comfortable and familiar atmosphere

Resident-centric care

Access to 24/7 care assistance, health maintenance, wellness and medication management

Daily living assistance

Families have peace of mind knowing help is always nearby

Resident-inspired social calendar

Enjoy a full daily calendar of activities and programming specifically designed to help our residents thrive

Weekly housekeeping, laundry and linen services

We take care of all the details

Thoughtfully designed common areas

Perfect for engaging friends and welcoming family

Tailored meals and dining

Three nutritious and healthy meals every day satisfying the toughest of palates and accommodating a range of special dietary needs

Enhanced Life Programming

Focusing on resident's individual strengths and preferences

Life Story Programs

Connecting residents, new friends and the staff around them

Family education and support groups

We cater to the emotional and spiritual well being of our families

Outdoor courtyard

Enjoy all the Sunshine State has to offer



Jump into engaging activities.

Engage, explore, connect

Our whole-person approach to assisted living and memory care means our community is full of opportunities to thrive -- with an activity calendar filled with options that keep residents active, engaged with friends and enjoying an improved overall quality of life.

Our residents know that a vibrant and engaging day waits right outside their door. Join in on a morning chair fitness class. Watch a classic movie with friends. Enjoy an outing to the Twistee Treat and a scenic drive. It's easy to make every day count in our community!

What's on your itinerary today?

- Fitness classes such as chair exercises and walking groups
- Art with a Heart, creative painting, and crafts
- Glamour manicures & mini-spa treatments
- Educational opportunities & Spiritual engagement
- Afternoon and evening classic movie watch parties
- Live weekly entertainment from the local Clermont community
- Ice cream socials, happy hours and impromptu gatherings
- Field trips to local attractions and scenic drive excursions
- Vibrant-themed community events
- Games such as bridge, canasta and bingo
- Brain teasers like crossword puzzles, trivia and word searches
- Snack socials & sing alongs
- Therapy dog visits

If there is something that you like to do that we don't already offer, just let us know! We want every resident to have a chance to engage and enjoy their individual interests.



Looking forward to every meal.

Inspired dining is our speciality



Superior Residences
of Clermont

SAMPLE DAILY MENU

BREAKFAST

Mixed berry vanilla baked oatmeal
Eggs of your choice
Cottage cheese and fresh fruit

LUNCH

Green salad with dressing of your choice
Beef Pot Roast
Baked Salmon
Garlic Mashed Potatoes
Honey Glazed Carrots
Baked Bread or Rolls
Fresh Coconut Cream Pie

DINNER

Cream of Califlower Soup
Skillet Ham and Potatoes
Green Beans with Bacon
Cornbread Muffin
Turkey Deli Sandwich
Fresh Pear Fruit Cup
Homemade Peanut Butter Cookies

Water, Coffee, Tea, Ice Tea and Milk always available



Thoughtful design and spacious accommodations

Community Rates and Levels of Care

Assisted Living Starting at Rates

Companion Suite.....	\$3,000.00
Private Studio.....	\$3,500.00
1 Bedroom.....	\$4,200.00
2 Bedroom.....	\$5,500.00

Levels of Care - Assisted Living

Bronze, Level 1.....	\$400.00
Silver, Level 2.....	\$800.00
Gold, Level 3.....	\$1,200.00
Platinum, Level 4.....	\$1,600.00

Forever rates are available – please inquire for more details!

Memory Care Starting at Rates (All-inclusive)

Companion Suite.....	\$4,250.00
Private Studio.....	\$5,900.00

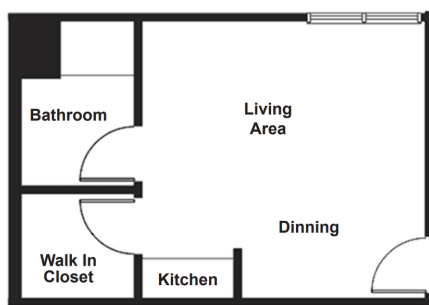
Second Person Fee.....\$1,500.00

Community Fee

A one-time \$2,500 non-refundable deposit for new residents made prior to move-in.

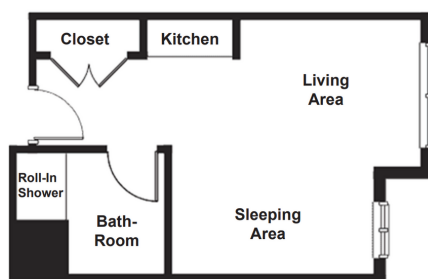


Floor Plans - Assisted Living



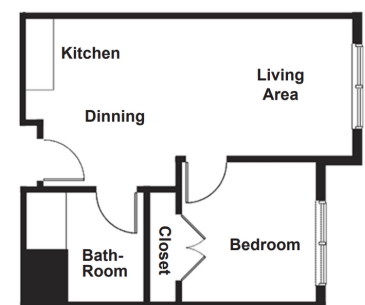
Oak-Hill

Assisted Living
343 sq. ft.



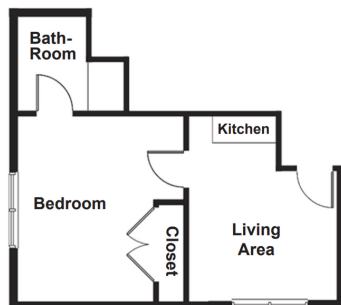
Cypress Cove

Assisted Living
382 sq. ft.



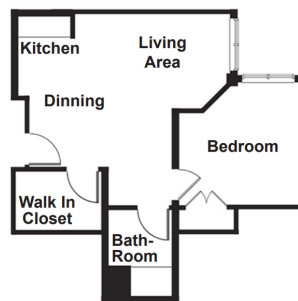
Montrose

Assisted Living
432 sq. ft.



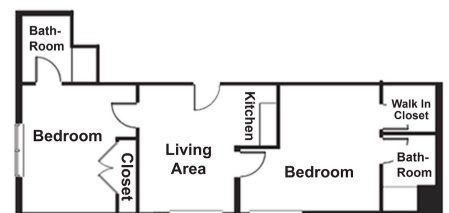
Louisa

Assisted Living
457 sq. ft.



Magnolia

Assisted Living
466 sq. ft.

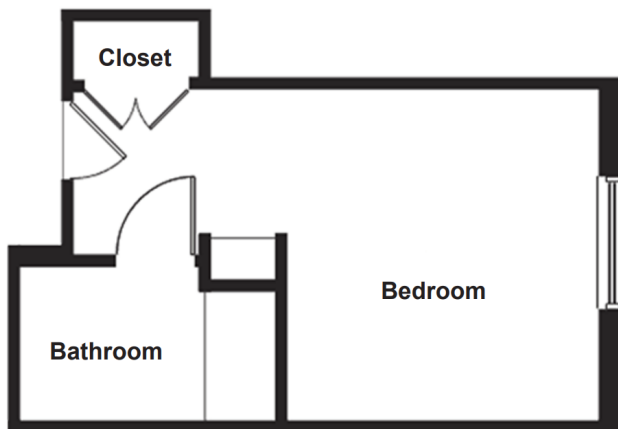


Royal Palm

Assisted Living
903 sq. ft.

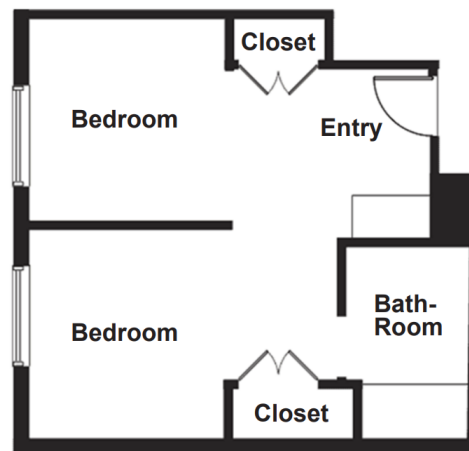


Floor Plans – Memory Care



Gardenside

Memory Care
339 sq. ft.



The Fountain

Memory Care
344 sq. ft.



Hear what our families have to say.

Happy residents and families

Pamela G.

Our Mother has lived here for 7 years and has loved every minute of it!



Joe F.

This community has the best staff, especially Tina!



Julie M.

The food is wonderful and served with so much love!



Rachel G.

They made my Dad's transition so easy!



Byron K.

Our Mother has lived here for 7 years and loved every minute of it!



David R.

Our Mother has lived here for 7 years and has loved every minute of it!





**Discover the joy of senior living and come see
why our families call our community home!**



**Superior Residences
of Clermont**

Assisted Living and Memory Care

www.superiorclermont.com

smallay@superiorclermont.com

(352) 268-1486

**1600 Hunt Trace Blvd.
Clermont, FL 34711**



Equal Housing
Opportunity



ALF #10160